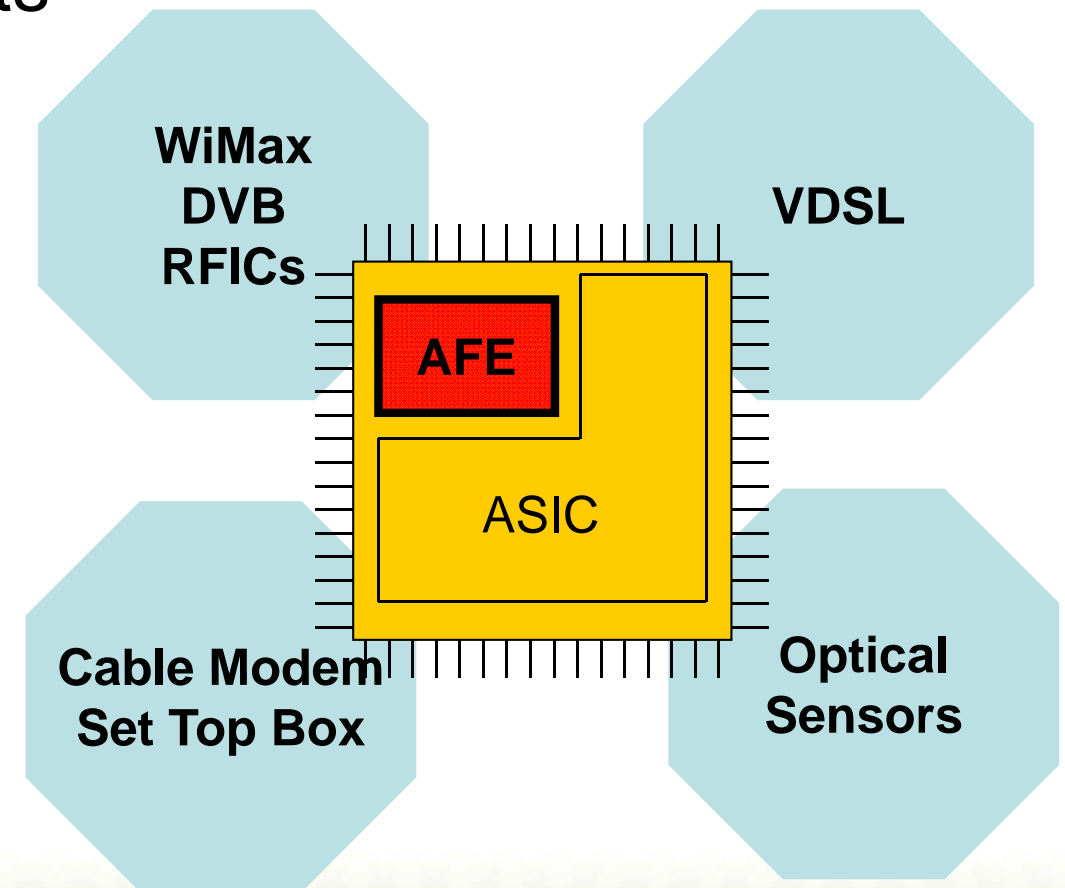


Mike Kappes
President

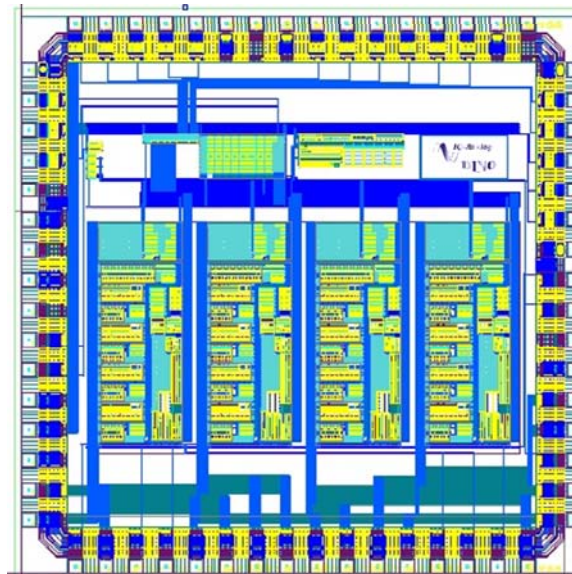
Introduction

- Analog Interface Technology Experts
- IP product differentiation
 - Lowest power
 - Smallest die size
 - ZERO external components

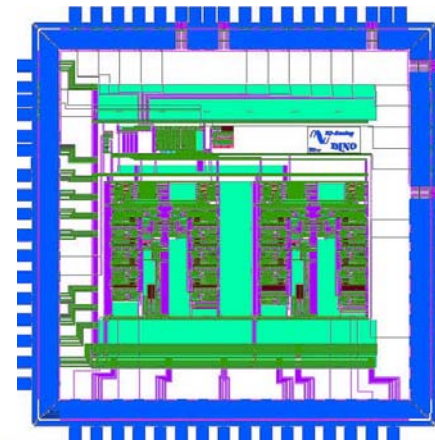


IP Strategic Benefits

- Lower Power
 - ½ the power
- Lower cost
 - ½ the size
- U.S. Based Support



0.18u QUAD 12b ADC
48mW @ 40Msps
1.68mm² core area



0.13u QUAD 12b ADC
34mW @ 80Msps
0.84mm² core area



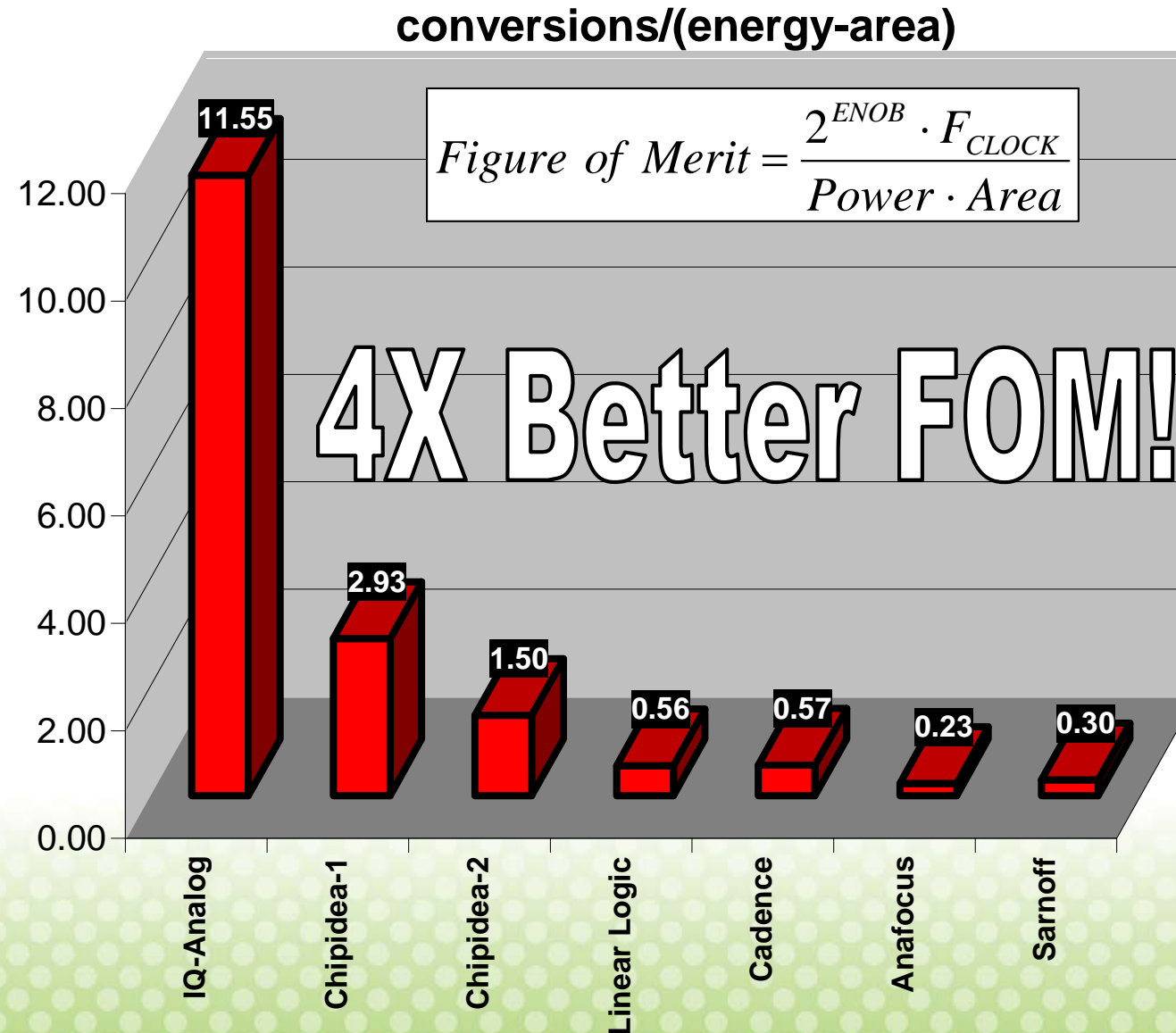
Performance Comparison



- Figure of Merit for Data Converters

PERFORMANCE

Power*Area



Product Matrix



- Pipeline ADCs
- $\Delta\Sigma$ Wideband DAC's
- Continuous-time $\Delta-\Sigma$ ADCs

90nm
12b-100MSPs
Pipeline ADC

0.13u
12b-80MSPs
Pipeline ADC

0.13u
12b-320MSPs
 $\Delta\Sigma$ DAC

0.13u
14b-300MSPs
 $\Delta\Sigma$ ADC

0.18u
12b-40MSPs
Pipeline ADC

0.18u
12b-320MSPs
 $\Delta\Sigma$ DAC



What's coming next



- **2nd Generation RFIC AFE for DVB-H/WiMAX**
- **12b/100Msps ADC+DAC for satellite receivers**
- **14b/100Msps ADC for cellular base stations**



Thank you!



- Please stay and talk with Mike
- Explore IQ-Analog IP at ChipEstimate.com
- Use IQ-Analog IP to Plan a Chip at DAC (get a DAC Trip Report!)

